



THE PLANE TALK

The official monthly Newsletter of Angelo RC Inc
www.angelorc.com

Angelo R/C Inc.
 4682 Arden Rd
 San Angelo, Texas
 76906



Volume 20 Issue , 2

February 2025

Upcoming Events:



Thursday February 6th
Angelo RC Club Meeting
 Golden Corral 7:00 PM

February 28th March 2nd
19th ANNUAL TINY FLY-IN
 San Angelo TX

March 7th — 8th
TRI-Cities Flyers
43rd ANNUAL SWAP MEET
 Garden Ridge TX



Bluecor X-vert by Gary Jones



Greetings Members!

This past month I attended the Georgetown Annual Swap meet The meet was an excellent meet with some very good sellers. I found some bargains and got to meet with some old friends. Next month, the Tri-City Fliers will host their annual meet at Garden Ridge. This meet is always a great meet and usually has very good weather this time of year.

As we start the new year we begin to prepare for our always successful indoor meet. For nearly 2 decades we have sponsored one of the largest indoor Fly-In meets in Texas. The Texas Indoor New Years Fly-In aka TINY Fly-In. This month's meeting will be about planning for this event. As usual. Our new members will absolutely not want to miss this meet. As usual, I want to thank Gary Jones for his wonderful photography and contributions to our newsletter this month.

Our monthly business meeting will be at Golden Corral this Thursday at 7PM. Come earlier if you want to eat. Hope to see you there! Happy New Year to all, and may it be a safe one!

Charlie Campbell Editor _____



TEXAS
 PARKS &
 WILDLIFE

PLEASE
 SUPPORT
 OUR LOCAL
 STATE PARK

ARC Inc 2025 Officers

President
Charlie Campbell

Vice President
Mark Greer

Secretary/Treasurer
Scott Bryan

Safety/Field Officer
Gary Jones

Webmaster
Jimmy Gaona

SR-72 Dark Star Toy

A Video by Gary Jones

Saw this advertised somewhere and bit the bullet. Almost uncontrollably tail-heavy on first flight. Added 5 grams in the nose and it settled down nicely. Might remove 2 grams, as it's a tad nose-heavy in the video. Ran out of elevator in the landing. Beautiful little toy!

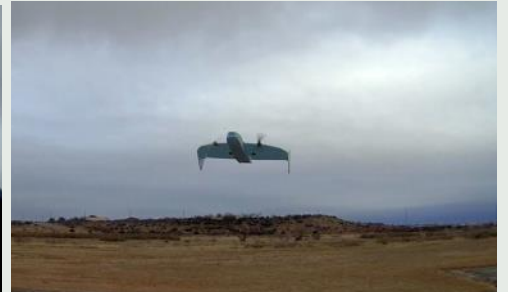


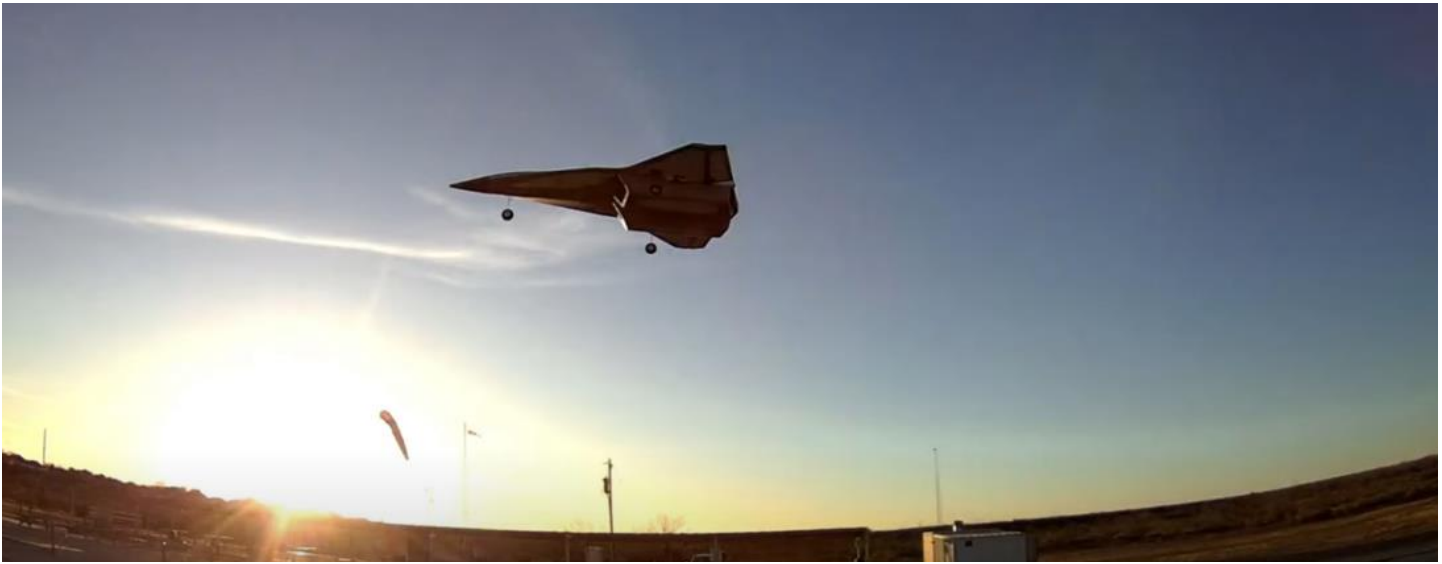
<https://youtu.be/67LR-yTVcLo>

Bluecor X-vert Models by Gary Jones



The Jones Files By Gary Jones







RC SWAP MEET TRANSLATIONS

- New In Box (NIB) = I'm pretty sure it's all there
- Professionally built = My cousin charged me a case of Natty Light
- Vintage = Rusty
- Hard to find = They all crashed
- It goes over 100mph = 54mph...in a dive
- Rare = Nobody liked them when they were new
- Only flown once = It didn't go well
- No time to fly it = I hate this miserable POS
- Mint = I'm too scared to fly it
- Mild hangar rash = I pulled it from the club trash can
- Needs a little work = With a sledgehammer
- I Know What I've Got (IKWIG) = I checked a 1986 Tower Hobbies catalog
- Classic = Nobody uses this crap anymore
- It flew great last time = Back when glow fuel cost \$5/gallon
- BNF = Includes an Airtronics 72MHz receiver
- Must go = I'm planning a bonfire
- Multi-color covering = My buddy gave me his Monokote scraps
- It flies on rails = I often confuse airplanes with trains
- It will do 3D maneuvers = I've looped it...once

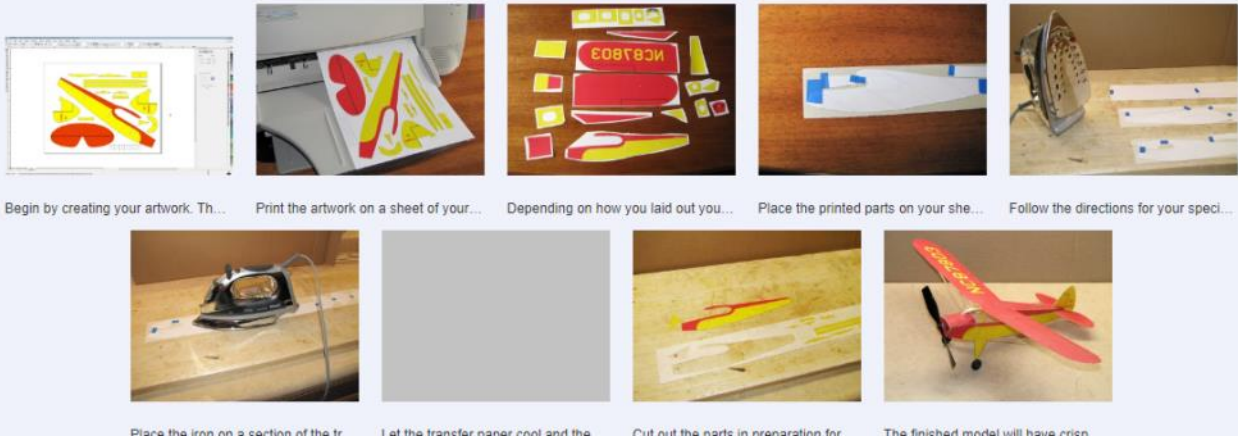
Paul and Ralph Bradley Model Airplane Hangout

Home Downloadable Plans Techniques and References Comet Catalogs

Transferring part Images To Balsa Using T-Shirt Iron-On Transfer Paper

What do you need? A printer that can print on letter size sheets of paper. That covers all but the specialty photo printers. The latter can actually be used but you will be limited to smaller print images. You will also need a package of iron-on transfer paper. This is typically sold for creating your own T-shirt images. Many stores that sell computer supplies carry iron-on transfer paper. It is also available from on-line dealers. Buy the type intended for light fabrics. Also, if the product being sold by your retailer specifies "Hot Peel" or "Cold Peel" select the hot peel variety. If no such specification is given on the package it will be the hot peel material.

The process. The photos that follow will take you through the steps. Basically, the process is create your artwork and then print the balsa sheets. Click on the photos to expand the images and associated text.



Begin by creating your artwork. Th... Print the artwork on a sheet of your... Depending on how you laid out you... Place the printed parts on your she... Follow the directions for your speci...



Place the iron on a portion of the fr... Let the transfer paper cool and the... Cut out the parts in preparation for... The finished model will have been

RC Groups Link

<https://www.rcgroups.com/forums/showthread.php?1295672-The-Comet-Stinson-SR-7-Another-Free-Flight-conversion-project-Video-Added&highlight=stinson%20sr%207>



CESSNA BIRD DOG

HALES QuickBuild series

FOGFLITE KITS

MANUFACTURED IN ENGLAND BY
A. A. HALES LIMITED, POTTERS BAR, HERTFORDSHIRE

IMPORTANT: CHECK AND IDENTIFY YOUR KIT PARTS



YOUR ASSEMBLY INSTRUCTIONS



| | | | | | |
|----------------------------------------------------------------------------------------------------------------------------------------------------------------------------------------|----------------------------------------------------------------------------------------------------------------------------------------------------------------------------------------|----------------------------------------------------------------------------------------------------------------------------------------------------------------------------------------|----------------------------------------------------------------------------------------------------------------------------------------------------------------------------------------|----------------------------------------------------------------------------------------------------------------------------------------------------------------------------------------|----------------------------------------------------------------------------------------------------------------------------------------------------------------------------------------|
| <p>3 Assemble the fuselage. Connect the fuselage to the wing. Pull the fuselage together and push the wing into the fuselage. Connect the fuselage to the wing.</p> | <p>4 Pull the fuselage together. Pull the fuselage together and push the wing into the fuselage. Connect the fuselage to the wing.</p> | <p>5 Connect the fuselage to the wing. Connect the fuselage to the wing. Pull the fuselage together and push the wing into the fuselage. Connect the fuselage to the wing.</p> | <p>6 Connect the fuselage to the wing. Connect the fuselage to the wing. Pull the fuselage together and push the wing into the fuselage. Connect the fuselage to the wing.</p> | <p>7 Connect the fuselage to the wing. Connect the fuselage to the wing. Pull the fuselage together and push the wing into the fuselage. Connect the fuselage to the wing.</p> | <p>8 Connect the fuselage to the wing. Connect the fuselage to the wing. Pull the fuselage together and push the wing into the fuselage. Connect the fuselage to the wing.</p> |
| <p>10 Connect the fuselage to the wing. Connect the fuselage to the wing. Pull the fuselage together and push the wing into the fuselage. Connect the fuselage to the wing.</p> | <p>11 Connect the fuselage to the wing. Connect the fuselage to the wing. Pull the fuselage together and push the wing into the fuselage. Connect the fuselage to the wing.</p> | <p>12 Connect the fuselage to the wing. Connect the fuselage to the wing. Pull the fuselage together and push the wing into the fuselage. Connect the fuselage to the wing.</p> | <p>13 Connect the fuselage to the wing. Connect the fuselage to the wing. Pull the fuselage together and push the wing into the fuselage. Connect the fuselage to the wing.</p> | <p>14 Connect the fuselage to the wing. Connect the fuselage to the wing. Pull the fuselage together and push the wing into the fuselage. Connect the fuselage to the wing.</p> | <p>15 Connect the fuselage to the wing. Connect the fuselage to the wing. Pull the fuselage together and push the wing into the fuselage. Connect the fuselage to the wing.</p> |
| <p>17 Connect the fuselage to the wing. Connect the fuselage to the wing. Pull the fuselage together and push the wing into the fuselage. Connect the fuselage to the wing.</p> | <p>18 Connect the fuselage to the wing. Connect the fuselage to the wing. Pull the fuselage together and push the wing into the fuselage. Connect the fuselage to the wing.</p> | <p>19 Connect the fuselage to the wing. Connect the fuselage to the wing. Pull the fuselage together and push the wing into the fuselage. Connect the fuselage to the wing.</p> | <p>20 Connect the fuselage to the wing. Connect the fuselage to the wing. Pull the fuselage together and push the wing into the fuselage. Connect the fuselage to the wing.</p> | <p>21 Connect the fuselage to the wing. Connect the fuselage to the wing. Pull the fuselage together and push the wing into the fuselage. Connect the fuselage to the wing.</p> | <p>22 Connect the fuselage to the wing. Connect the fuselage to the wing. Pull the fuselage together and push the wing into the fuselage. Connect the fuselage to the wing.</p> |
| <p>23 Connect the fuselage to the wing. Connect the fuselage to the wing. Pull the fuselage together and push the wing into the fuselage. Connect the fuselage to the wing.</p> | <p>24 Connect the fuselage to the wing. Connect the fuselage to the wing. Pull the fuselage together and push the wing into the fuselage. Connect the fuselage to the wing.</p> | <p>25 Connect the fuselage to the wing. Connect the fuselage to the wing. Pull the fuselage together and push the wing into the fuselage. Connect the fuselage to the wing.</p> | <p>26 Connect the fuselage to the wing. Connect the fuselage to the wing. Pull the fuselage together and push the wing into the fuselage. Connect the fuselage to the wing.</p> |  | |

Thank you Scott Bryan (ARC Treasurer) for putting this fler together and sending ot dozens of these to our FlyIn participants. To help get the word out.

The 19th Annual T I N Y

February 28th - March 2nd 2025

San Angelo Coliseum in San Angelo, TX

50 E 43rd St, San Angelo, TX 76903

Three full days of indoor flying fun! 8am to midnight all three days. Event is almost all open flying with a few demo flights, night flying, etc. Doors open to public on Saturday and Sunday. There is a no glass container rule now for the venue!

Landing fee: \$80 for all three days or \$30 per day. RC raffle drawn 4pm Saturday. Must be present to win! Raffle prizes are donated and RC related.

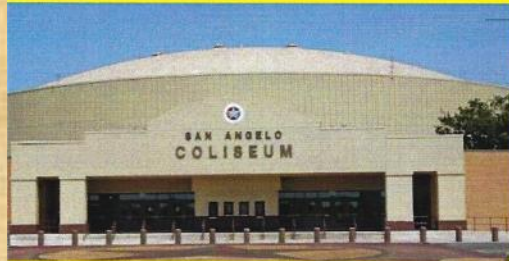
Most airplane types welcome. 16 oz and 3s limit. Small drones welcome but no CF blades.

Mark Greer CD 325.450.0635
WWW.ANGELORC.COM

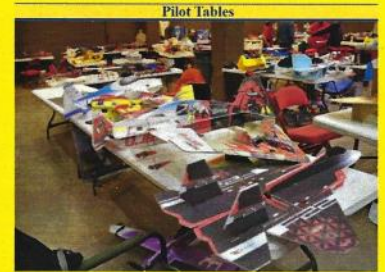


This event is free for the public to attend on Saturday 9am-8pm & Sunday 9am to 5pm. There are no concessions this year, so bring your own food and drinks. Plenty of seating for spectators.

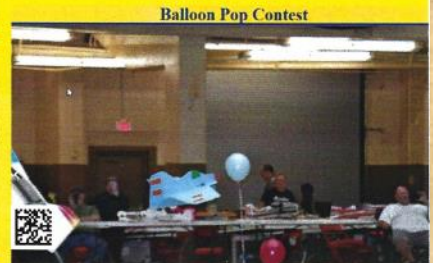
In addition to free flight, there will be several activities during the day such as the balloon pop, night fly, last man standing contest and fast delta race. Activities will be announced throughout the day. We hope to see you soon!



On the Flight Line



Pilot Tables



Balloon Pop Contest

43RD ANNUAL SWAP MEET

TRI CITY FLYERS, Inc. RC CLUB
SAN ANTONIO, TX

March 7- 8, 2025
AMA Event # 16963

LOCATION:

GARDEN RIDGE COMMUNITY CENTER
9400 Municipal Pkwy
GARDEN RIDGE, TX 78266



DOORS OPEN
3:00-9:00 PM Friday
9:00 AM-2:00 PM Saturday

Vendor SET UP
1:00 PM-3:00 PM Friday
8:00 AM-9:00 AM Saturday

FOOD & BEVERAGES AVAILABLE ON SITE

GENERAL ADMISSION \$5.00 PER PERSON PER DAY
WOMEN, AND YOUTH UNDER 18, ARE FREE

TABLES \$10.00 EACH PER DAY (NO TABLE LIMIT)
RESERVE YOUR TABLES EARLY FOR BEST LOCATION!
RESERVATIONS & PAYMENT MUST BE RECEIVED BY MARCH 2ND

No Fuel Allowed In Building Per Fire Regulations

FOR TABLE LAYOUT & RESERVATION FORM, SEND EMAIL TO:
tvrcm@att.net
OR CALL: Frank George at 805-478-3037

**WE LOOK FORWARD TO SEEING YOU AT ONE OF THE
LONGEST RUNNING RC AVIATION SWAP MEETS IN SOUTH TEXAS!**

The 19th Annual



February 28 - March 2nd 2025

San Angelo Coliseum in San Angelo, TX

50 E 43rd St, San Angelo, TX 76903

Three full days of indoor flying fun! 8am to midnight all three days. Event is almost all open flying with a few demo flights, night flying, etc. Doors open to public on Saturday and Sunday. There is a no glass container rule now for the venue!

Landing fee: \$80 for all three days or \$30 per day.

RC raffle drawn 4pm Saturday. Must be present to win! Raffle prizes are donated and RC related.

Mark Greer CD

325.450.0635

Most airplane types welcome. 16 oz and 3s limit. Small drones welcome but no CF blades.



WWW.ANGELORC.COM

Photo courtesy of Richard Ng